

Moving Forward Together

Discussion on Future Projects



Land Acknowledgement and Opening Prayer



Agenda

- **8:30 AM** – Registration
- **9:00 AM** – Welcome and Prayer
- **9:20 AM** – Networking
- **9:45 AM** – Criteria for Decision Making
- **10:15 AM** – Coffee Break (catered by Eadha Bakery)
- **10:30 AM** – Research Topics
- **11:15 AM** – Discussion of Selected Research Topics
- **11:40 AM** – Closing
- **12:00 PM** – Lunch (catered by Feast Café and Bistro)

March 2023 Post-it Exercise

Read

- TRC Calls to Action
- 21 Things I Didn't Know About the Indian Act
- Five Little Indians
- Valley of Birdtail
- Treaty 1
- Rehearsals for Living
- The End of the Cognitive Empire: The Coming of Age of Epistemologies of the South
- Frequently Asked White Questions
- 2SLGBTQIA+ book
- Bill C-92

Watch/Listen

- We Can't Make the Same Mistake Twice
- For Love
- Niigaan and the Lone Ranger

Meet

- With decision-makers within the University to discuss equity
- With a SPECTRUM partner
- With the Mama Bear Clan

Educate

- Through the SPECTRUM/MCHP website
- On equity topics
- Our children on how to live a good way

Try

- A First Nations business and write a review



Decision Criteria

Theme	Description
1	Create societal and transformative change
2	Centres voices and experiences of those who are affected by the policy change we seek to create
3	Ensures openness to creative and innovative approaches and solutions
4	Balances impact and feasibility
5	Collaboration across sectors is critical
6	Specific project areas (particularly those that are getting attention, where there is openness to change)

Currently Feasible Projects

Child Welfare

- Reunification after apprehension (time to reunification, further apprehensions, outcomes)
- Qualitative follow up work on demonstration project to identify best practices
- Interaction of child welfare with education, health, justice
- Focus on youth aging out of care

Mental Health

- Mental health disorders in youth (changes over time, across regions, trajectories)
- How mental health intersects with disability
- Eating disorders

Basic Income

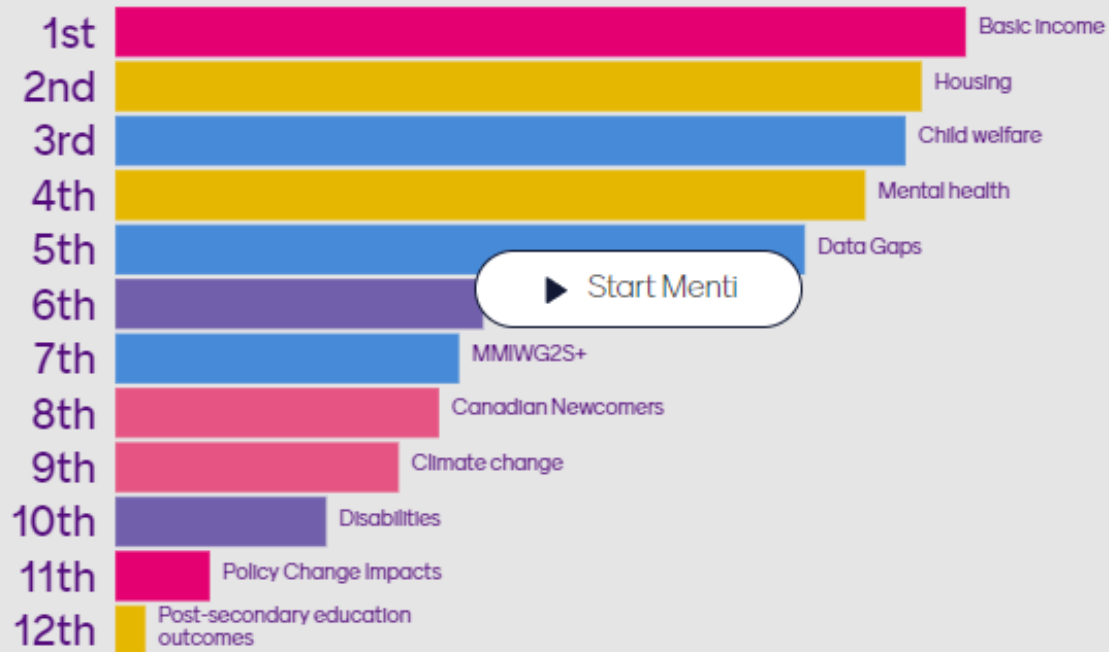
- Outcomes for those receiving income assistance

Climate Change

- Link weather data to repository to examine associated health, mental health and other outcomes

Join at menti.com use code 9410 3061

Choose your top three project priorities



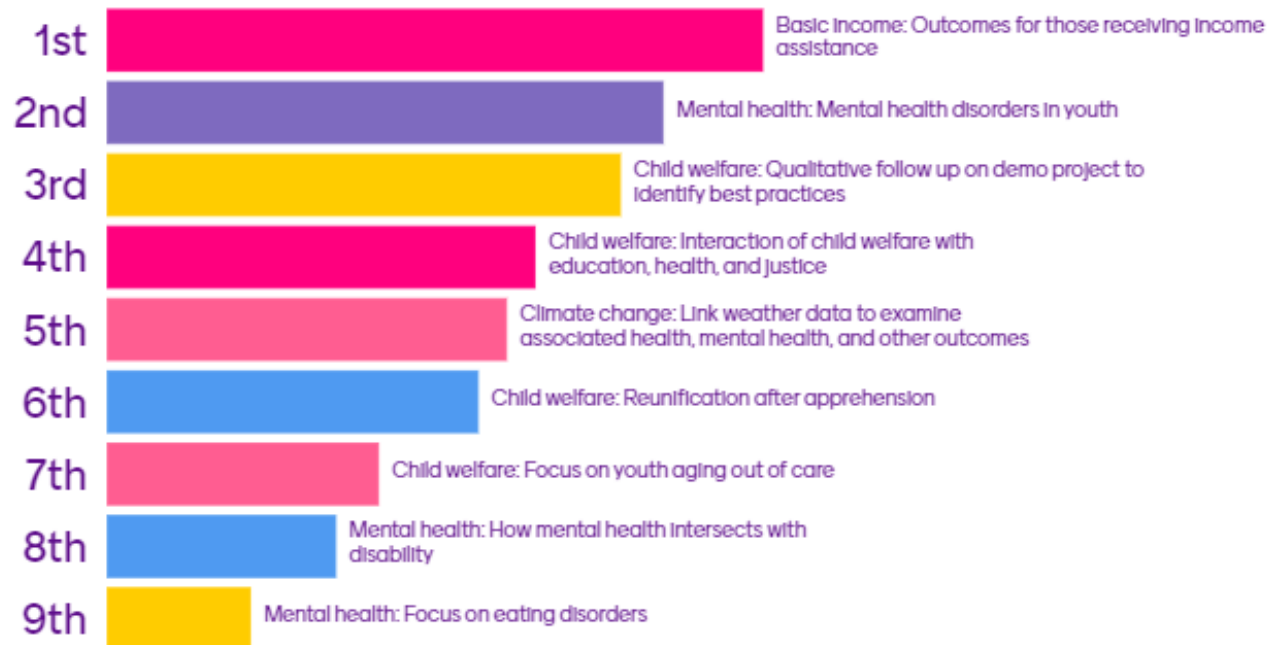
▶ Start Menti

Responding is off

35



Choose your top project priority



Research Project Discussion

- Discuss possible research questions within prioritized topics
 - Confirm use of repository
 - How projects link together

Closing Words

- With its focus on inclusiveness, social justice, generating policy capacity, evidence, regularly meeting/deliberating, SPECTRUM advances policy innovation (coherent systems, integrated, fair, decolonized, non-competitive) rather than managing problems.
- By collaboratively prioritizing future research projects, SPECTRUM is prioritizing policy innovation.
- You are policy innovators!
- This work is not being done elsewhere.