

# SPECTRUM

From Research to Policy: The Next Steps

# Agenda

- Welcome & Land Acknowledgement
- Opening & Prayer
- SPECTRUM Update
- Demonstration Project Results
- Coffee Break (10:30 AM)
- Discussion Groups
- Sharing of preliminary results
- Department of Families Update
- Lunch (12:00 PM)
- Policy Option Implementation
- Discussion Groups
- TBD Group Update
- Coffee Break (3:00 PM)
- Discussion Groups
- Closing (4:00 PM)

# SPECTRUM

Update

# Mission

SPECTRUM brings people together to use data and lived experience to inform how we can become a fairer and more just society. We share a commitment that we can achieve more by working together than we could working alone.

**WHO** – we are a collaborative partnership of community organization representatives, government staff, researchers and students from across Manitoba

**WHY** – we are seeking creative ways to make human services, programs and policies better serve people's needs

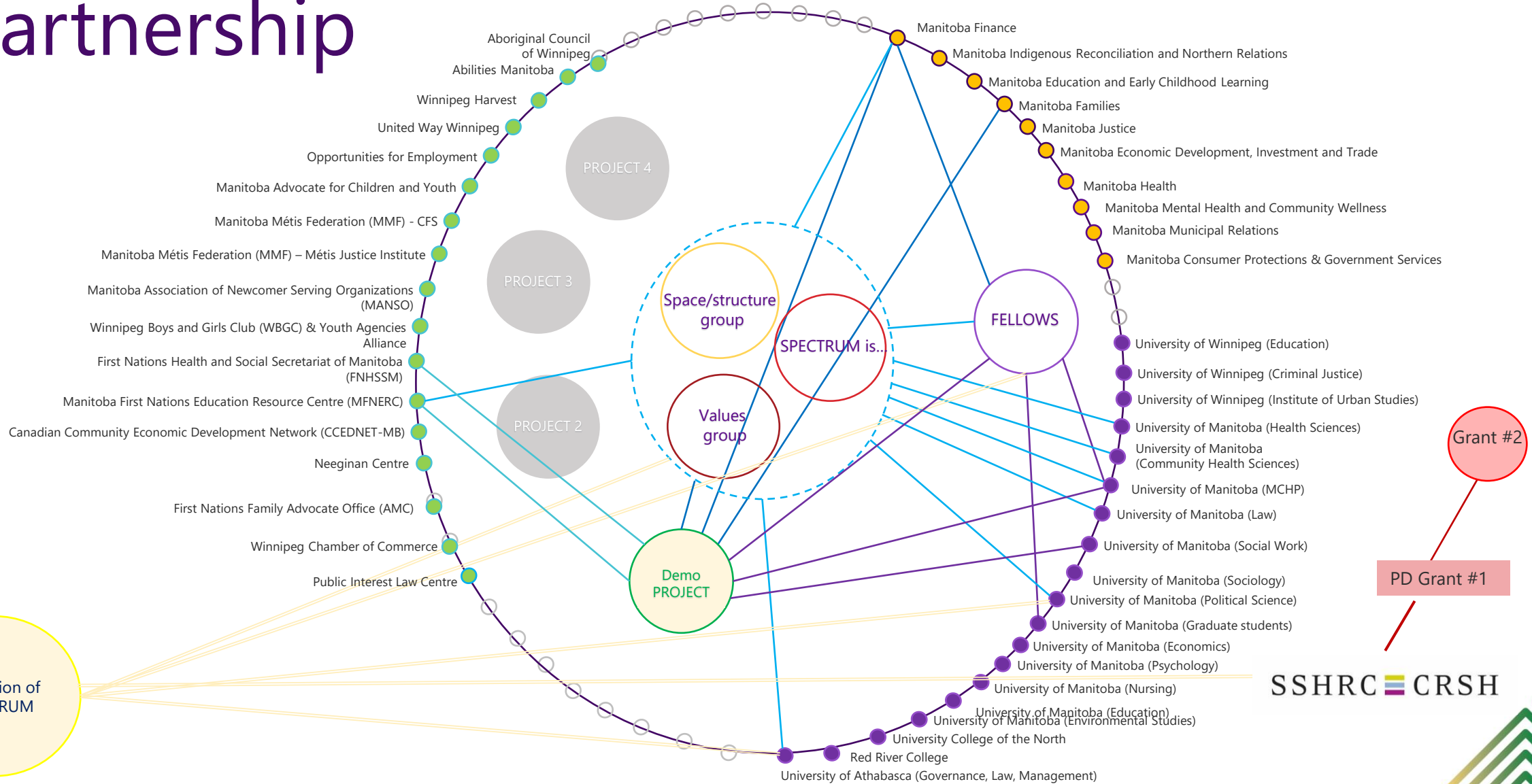
**HOW** – we are doing this through applied research, predominantly using the Manitoba Population Research Data Repository

**WHAT** – our ultimate goal is to achieve equity across the complete spectrum of outcomes, including: health and well-being, education, justice, housing, income, and employment.

# Values



# Partnership



SSHRC  CRSH

# Partnership Grant Working Group

## SSHRC Partnership Grant

- Up to \$2.5 million
- Research and evaluation

## Two Stages

1. February 2023
2. October 2023

## Stage 1 Submitted

- Results of stage 1 announced in June

# Presentations

Recent presentations:

- International Population Data Linkage Network (IPDLN) 2022
  - Edinburgh, United Kingdom
- Faculty of Humanities and Social Sciences Research Symposium 2022
  - Athabasca University
- The Edwin S.H. Leong Centre for Healthy Children's Inaugural Symposium 2022
  - University of Toronto
- Evidence to Action Workshop
  - Winnipeg, 2022
- Child Welfare Data Exchange Meeting
  - Montreal, 2023





# Publications

Accepted papers:

- The Full SPECTRUM: Developing a Tripartite Partnership between Community, Government and Academia for Collaborative Social Policy Research

Papers in progress:

- Expanding the Table: Student Fellows Involvement in Experiential Learning within a Community/Academic/Government Social Policy Collaborative
- Evaluating SPECTRUM: Evaluating an innovative collective promoting social justice through policy development and research
- Demonstration Project results

Book chapter in progress:

- Balance: How A Unique Student Fellowship Model Enables Proactive Wellbeing



# Demonstration Project:

Outcomes of Children Involved with Child and Family Services: Comparing Children in Care with Children Receiving Services Without Going into Care



Research



Partnership building



Policy

# Demonstration Project Team

## Advisory Circle:

Florence Paynter (Knowledge Keeper)

Sherry Copenace (Knowledge Keeper)

Roberta Godin (Grandmother)

Cora Morgan (First Nations Family Advocate)

Kayla Frank (Policy Analyst, First Nations Family Advocate Office)

## Academic/Research:

Marni Brownell (MCHP)

Nathan Nickel (MCHP)

Marlyn Bennett (U Calgary)

Lisa Flaten (MCHP)

Heather Prior (MCHP)

Randy Walld (MCHP)

Hygiea Casiano (UM, Psychiatry)

## Student Fellows:

Jamie Pfau (Fellow)

Anita Durksen (Fellow)

Colette Scatliff (Fellow)

Stephaney Patrick (Fellow)

Soomin Han (Fellow)

Sana Amjad (Fellow)

Mikayla Hunter (Fellow)

## Community Organisations:

Nora Murdock (MFNERC)

Liz Decaire (FNHSSM)

Stephanie Sinclair (FNHSSM)

Kayla Frank (First Nations Family Advocate Office)

Jennifer Chartrand (First Nations Family Advocate Office)

## Government Representatives:

Scott Sinclair (Labour, Consumer Protection & Government Services)

Chris Nash, James Huston (MB Families)

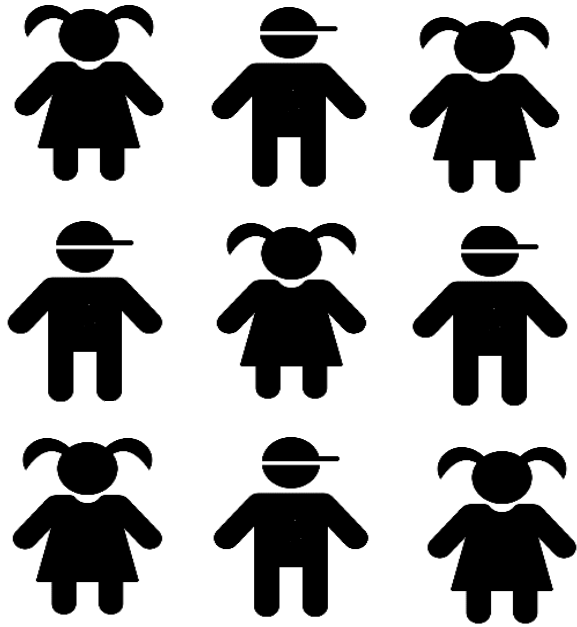
Elizabeth Debicka (MB Families)

Anna Slavina, Tyler Amos, Matt Cook (Labour, Consumer Protection & Government Services)

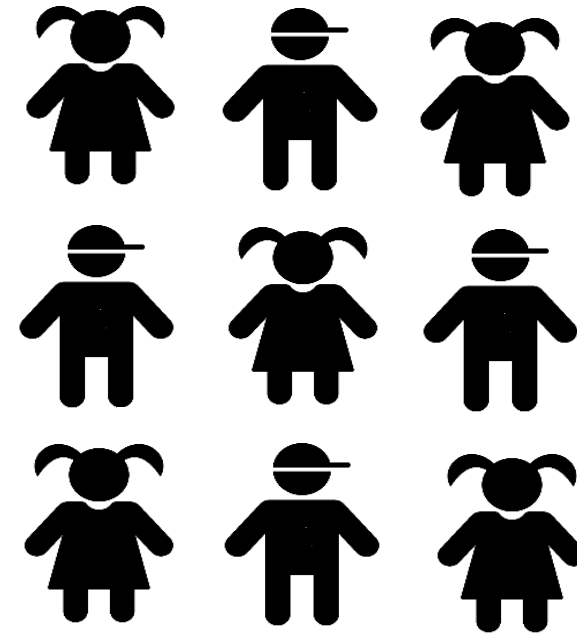
Jay Rodgers (General CFS Authority)

Teresa Mayer (General CFS Authority)

Demo project: *Compare these 2 groups on outcomes:  
health, education, justice*



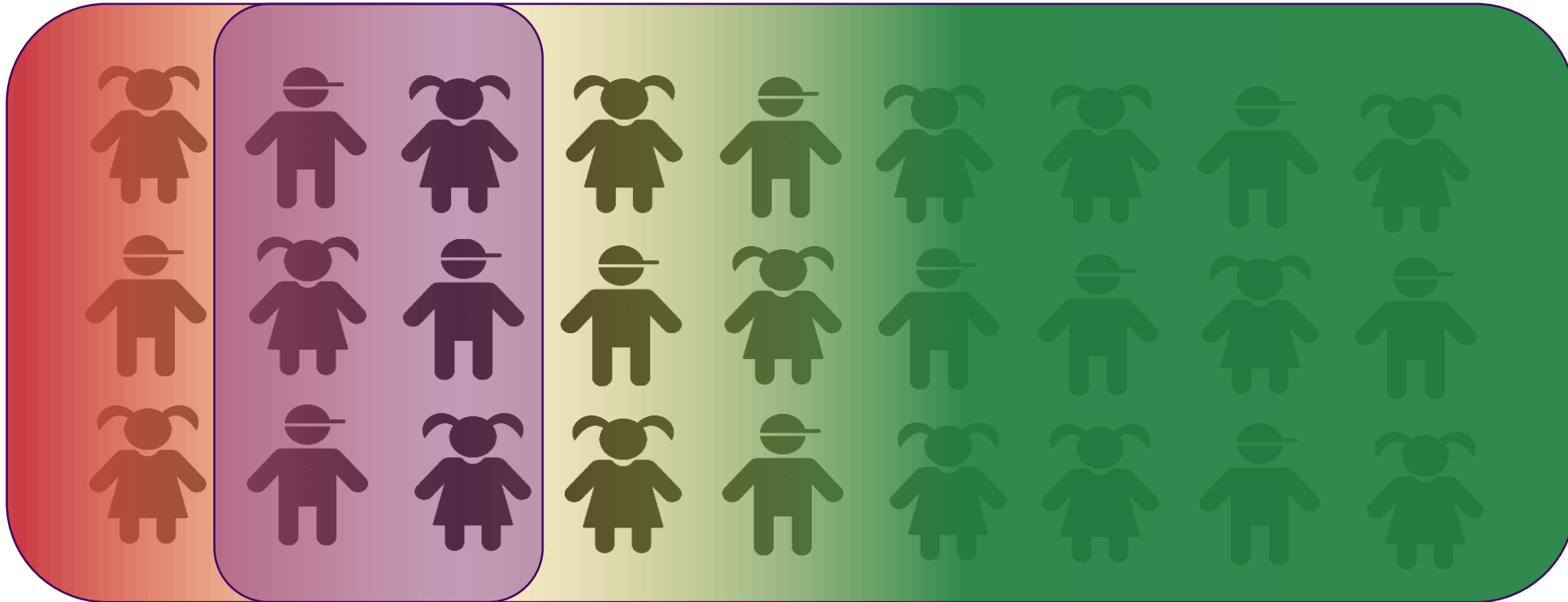
Children taken into care



Children in families with  
an open CFS file

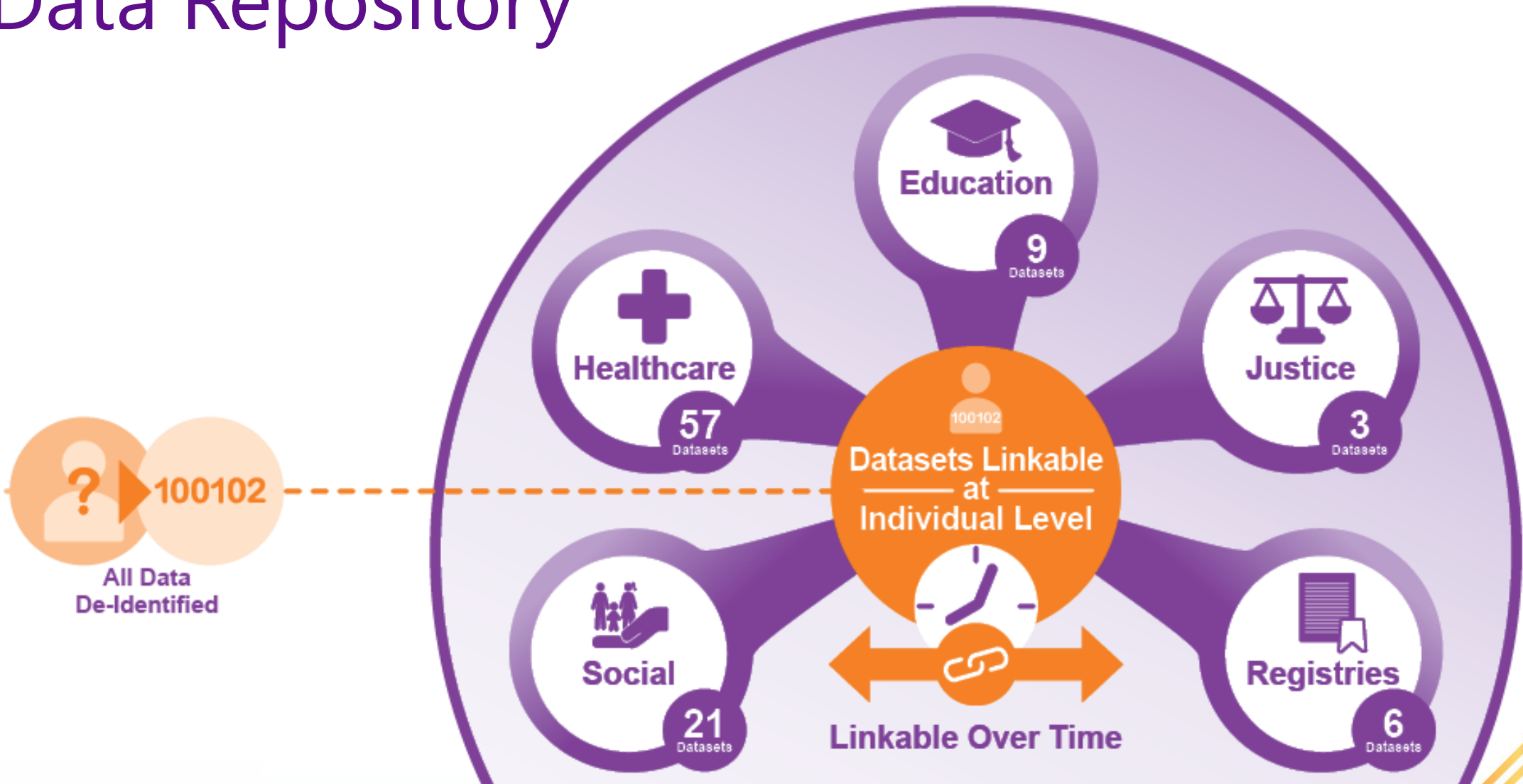
# Demo Project

Will compare measures of health and well-being for children who have been taken into care by CFS with children who were not taken into care but received protection services from CFS



Unsafe      Safe with Plan      Safe

# Manitoba Population Research Data Repository



# Study Cohort

All Children in Manitoba born  
1998/99 - 2017/18



Children with CFS Contact  
2007/08 – 2017/18



**n = 19,959**  
Children in care

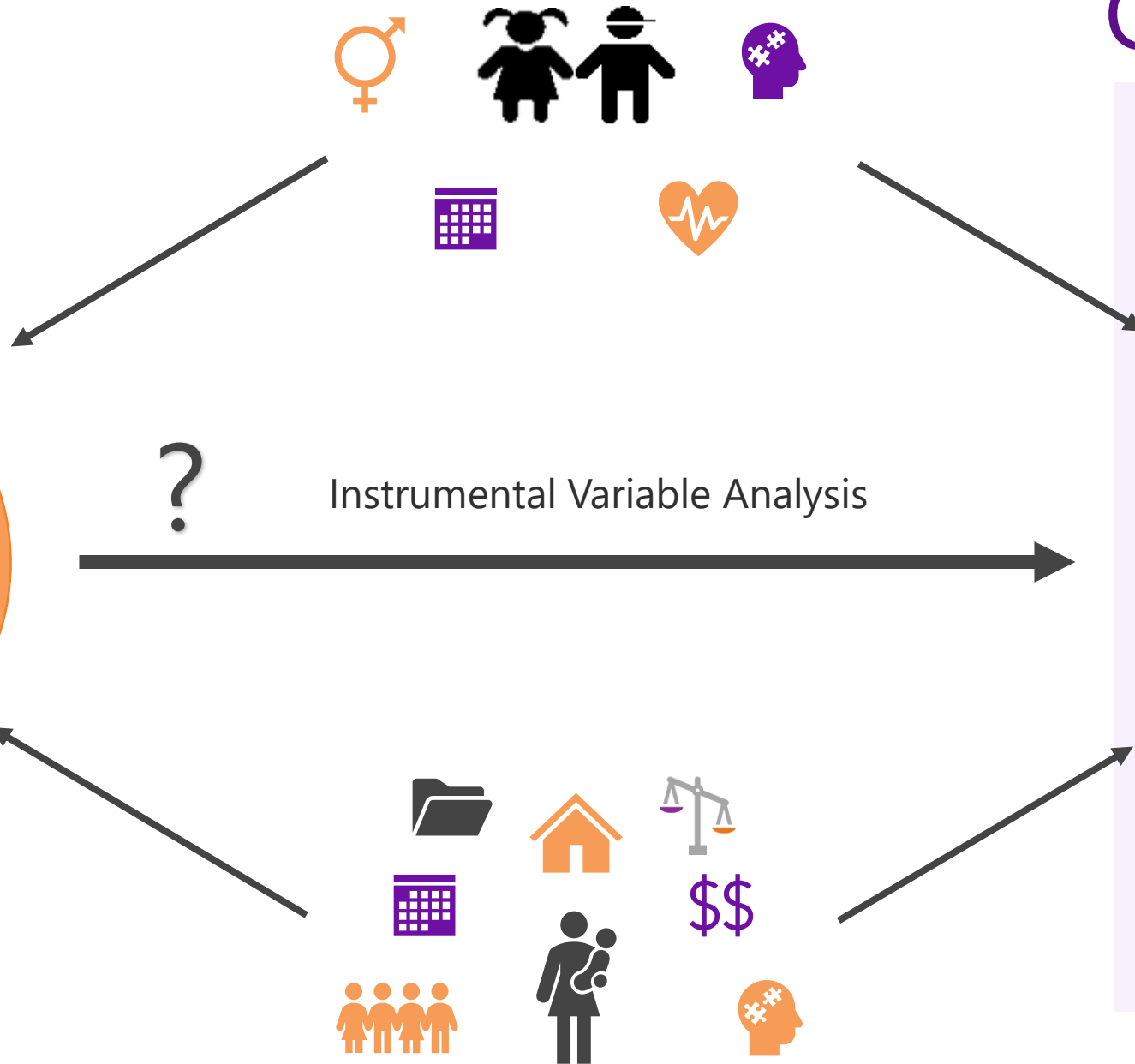
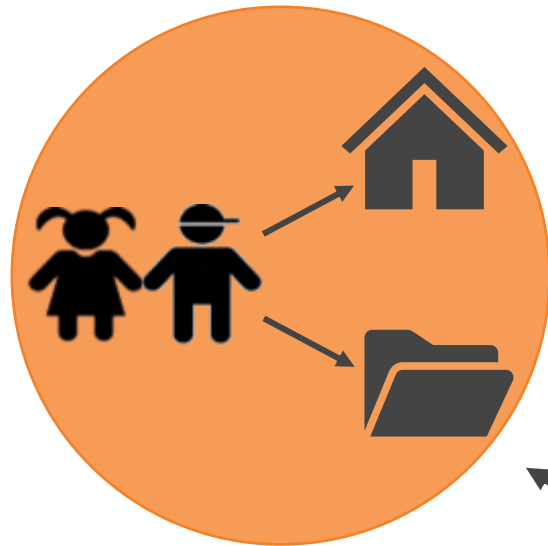


**n = 28,732**  
Children in families with  
open CFS file



# Outcomes

# Exposure



- Health**
  - Immunization
  - Mortality
  - Hospitalizations
  - STIs
  - Teen pregnancy
  - Teen birth
  - Suicide
  - Mental health
- Education**
  - Early Development
  - Instrument
  - Grade-specific assessments (Reading & Numeracy)
- Justice**
  - victim, witness, accused
  - Charges
  - Incarceration



# Results (Preliminary)

Redacted for distribution

# Small Group Discussion

Was there anything about these results that was unexpected?

Was there anything that you think was missing?

Who do you think needs to hear these results?





# SPECTRUM

## Sharing Results



# Thoughts on Sharing of Results

- Partnership built on trust
- Partners bring different perspectives
- Trying to get to the truth with evidence
- Evidence being produced by SPECTRUM partnership
- Partners may differ on how to act upon evidence produced
- Process: consider preliminary and confidential until formally peer-reviewed
- Possible working group to craft messaging about research results

# Questions to Consider:

- What if government doesn't go as far as some of us would like? Can we recognize as a partnership that there may be restrictions on our government partners and still commit to working together?
- What if community organizations want to use results to promote a different approach than that decided upon by the partnership? How will we reconcile those different approaches in the public space (especially media questions which may require shared messaging)?
- How can the partnership as a whole support different partners using results differently according to their own priorities?
- How will we define success, or failure, in terms of adoption and implementation of policy options?



# SPECTRUM

## Public Policy Update

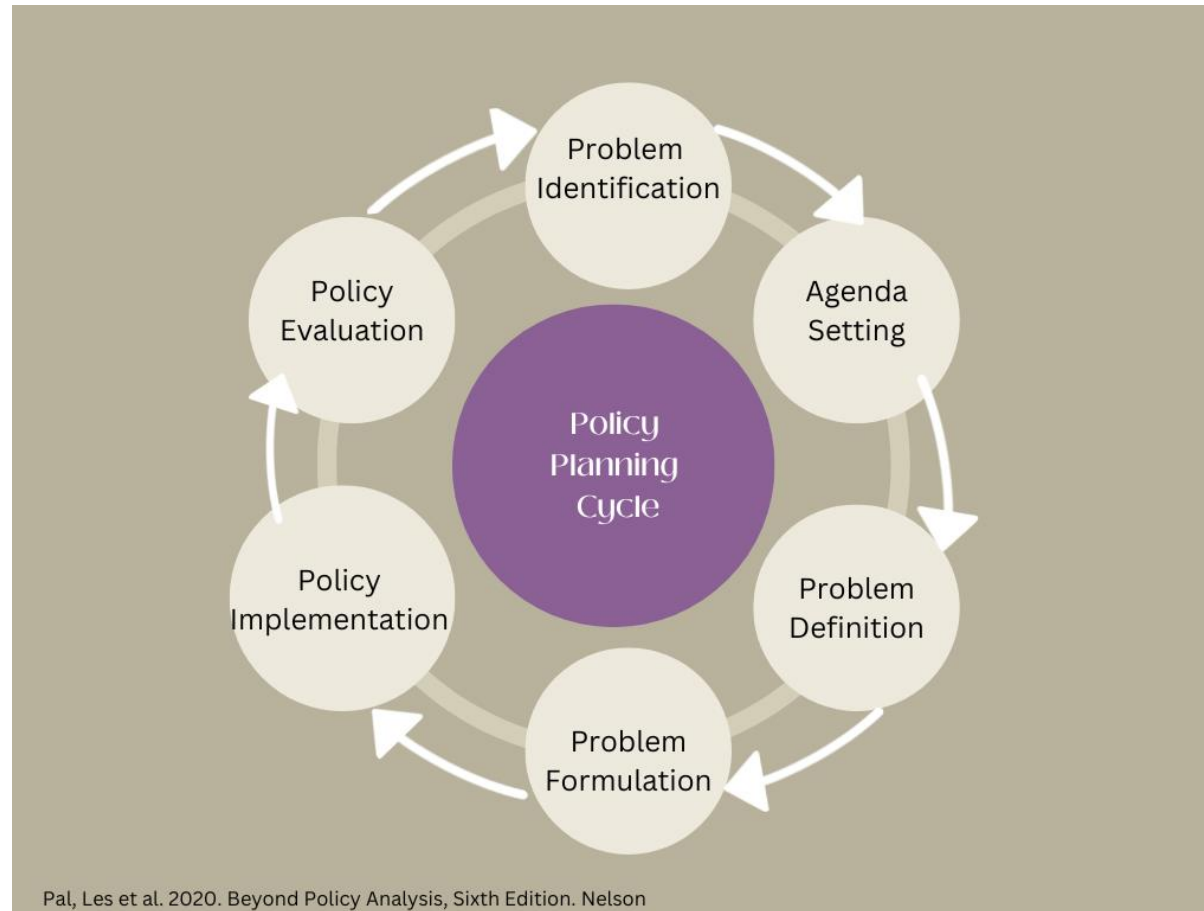






But first, a reflection on why this work is so important...

# Public Policy Cycle Overview



# Public Policy + Demonstration Project

- September 19, 2019: SPECTRUM's first workshop
  - We did not know what our central research question was
  - Decided to focus on children and youth in care through a collaborative process
- Policy changes MUST get on the agenda before policy formulation can happen
  - Department of Families sees the value in partnering
- SPECTRUM can move towards co-designing a policy implementation plan

# Next Steps

- Demonstration Project findings indicate poorer outcomes for children who are taken into care.
- Explore potential differences at the agency + case worker level.
- Qualitative interviews with agency staff to identify potential differences .



# Small Group Discussions



How can partners and the Department of Families and Authorities work together to co-design a plan based on the quantitative and qualitative data?

# Small Group Discussion

Going forward, how can our partners be involved?  
What supports do partners need to be involved?



# Final Thoughts

Good policy implementation requires mechanisms for monitoring, learning, and improvement.

How can these kinds of policy feedback loops be developed?



# SPECTRUM

“TBD” Working Group



# Three Updates:

1. What we have been working on
2. A proposed new name
3. Where do we go from here?

# Since Our Last Workshop...

- We sought the guidance of Elder Sherry Copenace **about the name of our working group.**
  - Naming is sacred custom that gives life and incurs significant responsibilities.
  - **An Indigenous** name would belong to the partnership as a whole, not just a WG. **Why? Because the name** must be protected and nurtured forever **by the collective partnership not just a working group.**
  - We need collective clarity to move forward.



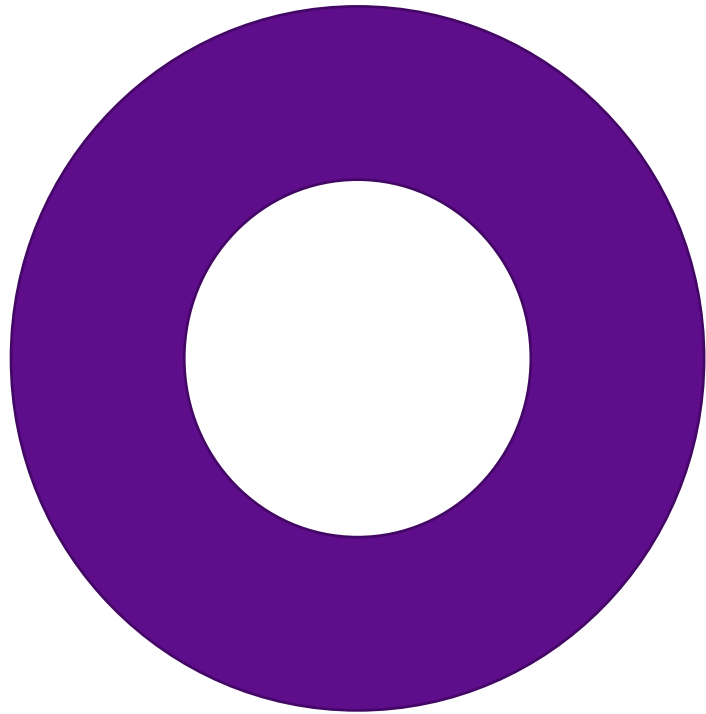
When a name is granted, it brings a new life into being

- This represents a significant commitment from all the partners for all time.
- We would have to care for SPECTRUM as if it were our own grandchild.
- SPECTRUM would need four people dedicated to ensuring that we honour the name.
- Elder Sherry is willing to work with us if we decide to proceed.

How to ensure that we address colonialism and other oppressions in ways that allow us to be accountable to each other and the communities we serve

- We need **TRUST** – so we can acknowledge and address inequalities as an ongoing core of our process.
- We need a **COMMITMENT** to working through our differences and ambiguity.
- We need to work together to understand and learn, accepting that "everybody has a piece of the truth" and reach a **CONSENSUS**.

# Through our Space/Structure Working Group we...



- We used the image of a circle and made a connection to Indigenous teachings about circles – interconnectedness, no beginning or end, inclusive, with space for silence.
- We developed a statement of Reciprocity and Commitment (Copies on your tables).
- In our TBD Working Group meetings since our meeting with Elder Sherry we have looked for a name that captures our purpose until we are ready, if ever, to seek an indigenous name **for the partnership as a whole.**
- We found that this group ties back to all that earlier work.

# The **SEEK** (Space for Emerging and (re)Emerging Knowledges) Working Group

- The ongoing process of finding a name, and doing the work takes time, because *how* we do that work matters.
- **SEEK** captures the idea that each of us comes to SPECTRUM with different levels of knowledge and experience with colonialism and oppression and we must each seek out ways to work together.
- This work is cyclical, and we will come back to this work each time we gather.

# Small Group Discussions

- How should we as a partnership seek to grow our own knowledge and understanding of oppression and colonialism so that we can support SPECTRUM'S work? Where should this work happen – workshops, working groups, as individuals?
- Does the name "**SEEK**" working group resonate for you? Why or why not? Do you have other suggestions?
- Do you think SPECTRUM should invite Elder Sherry to come and share her wisdom at a workshop so that we can consider more deeply whether SPECTRUM is ready for an Indigenous name? Why or why not?





# Your Commitment to SEEK

- On a post-it note that you find at your table, write one action that you commit to in the coming weeks.
- Take a photo of it for your own record.
- Stick it in the designated space before you leave today

For example:

I commit to reading *Frequently Asked White Questions* by Ajay Parasram and Alex Khasnabish

# SPECTRUM

